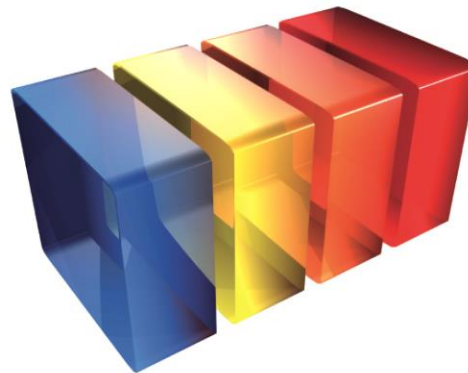


December 2018



SCANLOG

*RESPONSIBLE
LOGISTICS*



Our Vision

We shall be the World's most responsible logistics company.

Our Mission

We shall be providing Cost efficient logistics solutions with lower Environmental impact and higher Quality, and we shall take social Responsibility where we operate.



Responsible Logistics

- Responsible Logistics is for us to take full responsibility for cost efficiency, environmental impact and delivered quality.
- We want to manifest our responsibility as a leading logistics operator to produce and offer transport solutions that are both economically and environmentally sustainable over time.
- We are proud that our employees take great individual responsibility to ensure that Scanlog lives up to and exceeds our customers' expectations.
- We call it Responsible Logistics – by Scanlog.

SCANDINAVIAN LOGISTICS PARTNERS



The ideas behind Scanlog

- Attract industry best staff through partnership and profit sharing
- Provide the best tools - brand name, international partners/network, and advanced IT support
- Offer all transportation modes within the same organisation
- The strive to create cost efficient and sustainable solutions should govern the choice of transport mode
- Environmental concern, quality and cost efficiency go hand in hand
- A spirit of new frontiers, pride and values

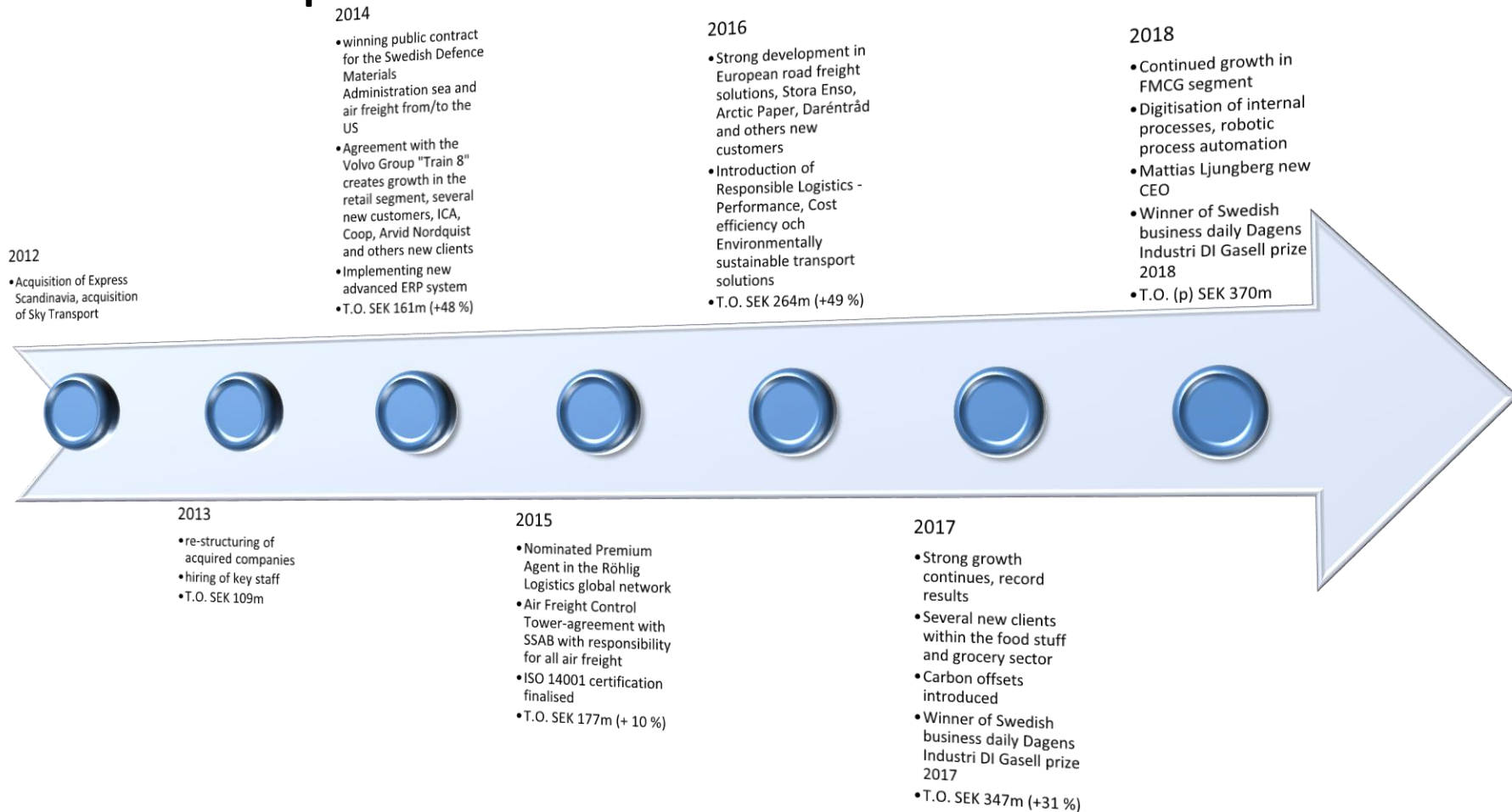


Facts

- Started in 2012 through acquisition of the Austrian Railways Scandinavian freight forwarding arm founded in 2004
- Acquisition in September 2012 of Sky Transport, one of the largest Swedish air freight forwarders established 1994
- Owned by management through SLP Intressenter AB together with minority shareholder Swedish Orient Line AB
- 35 co-workers in four offices in Stockholm, Gothenburg, Malmö and Oxelösund
- Largest customers include Coop, ICA, Arvid Nordquist, Stora Enso, SSAB, Westinghouse Electric, Swedish Defence Materials Administration, RUAG Space, Elekta
- ISO 9001 and 14001 certified, IATA license, security approval EC/EU, AEO certified



Development



Sustainability

- We know that transports significantly affect the environment – we have therefore a particular responsibility to contribute to minimizing the negative environmental impact as far as possible.
- By working with all transportation means, we can fully focus on letting only the desire to create cost-effective and environmentally sustainable solutions guide the choice of transport mode.
- We are always looking at exploiting transport means that otherwise run empty and at the same time increasing capacity utilization in existing transport solutions.
- Our quality work means focusing on details while simultaneously having a comprehensive understanding of the whole, and having a constant quest for improvement.
- If we do not deliver agreed quality, we use a *root cause analysis* process to find the true cause and correct any systematic errors.



Carbon offsets

Global transports increase and so does the impact on the environment. Even when capacity utilization is maximized and optimal modes of transport are used, transports still generate greenhouse gas emissions and use more resources than the Earth has the capacity to generate.

Scanlog therefore offers our customers to offset CO2 emissions in a way that makes a difference.

After agreement on requirements, a calculation is made based on the transport solution that best meets our customer's needs. The financial calculations are complemented by an environmental impact analysis and a proposal for carbon offsets.

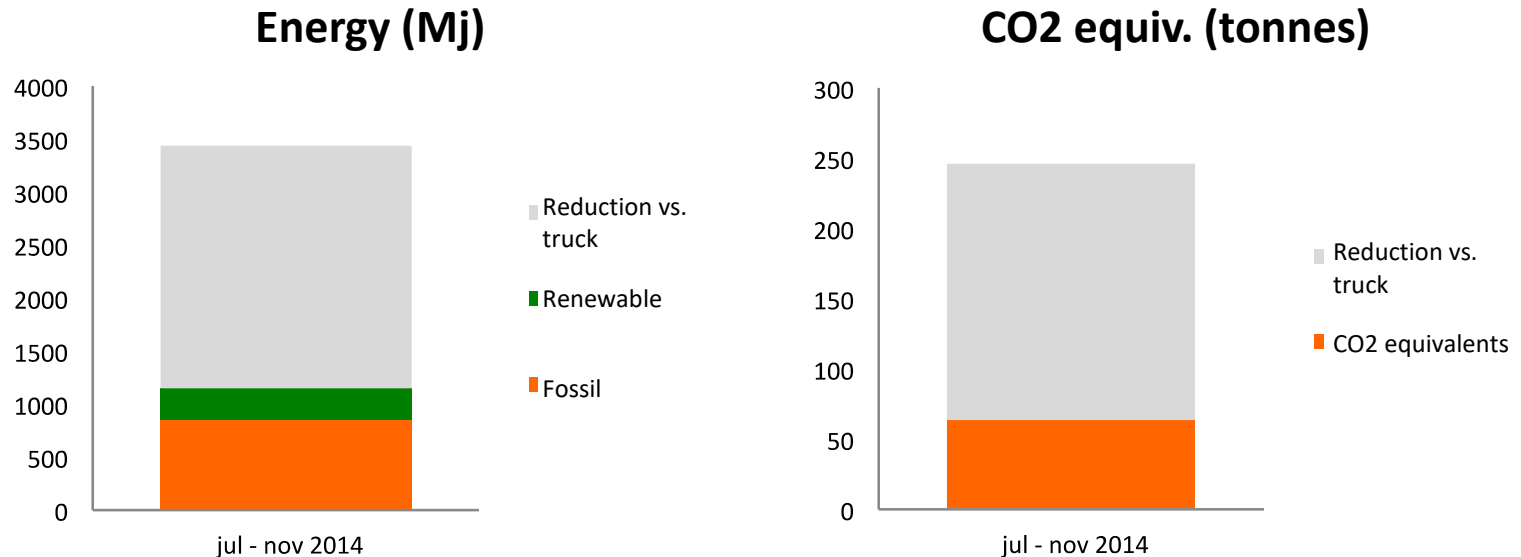
When our customers choose to offset transport related emission through us, the means go to projects that also contribute to social sustainability in the societies where they are implemented.

The three projects we collaborate with around the world are all certified according to the United Nations Gold Standard and Plan Vivo.

In this way we jointly contribute to both sustainable transports and a sustainable society.



Example Customer Environmental Impact Report



- Total energy use
 - whereof fossil fuels 840 Mj
 - whereof renewable fuels 304 Mj
 - total (fossil) reduction rail vs. truck 2 293 Mj
- Total CO2 equivalents 65 tonnes
 - total reduction rail vs. truck 181 tonnes



Our Solutions

- Cost efficient and environmentally attractive multimodal short sea and rail freight solutions for imports
- Intermodal sea freight solutions for exports and imports to and from Asia, the Mediterranean, Africa, North- and South America
- Special road freight solutions for exports and imports requiring out of gauge and just-in-time transport
- Fast and intelligent air freight solutions
- Cutting edge solutions for the Shipping-, Offshore-, Aerospace- and Defence Industries
- EDI integration for increased reliability and minimised administration





Rail Freight Solutions

- The only independent rail freight forwarder in Scandinavia
- Door-to-door offering in multimodal solutions including pre- and on-carriage to and from rail terminals
- Intermodal railway solutions for imports from Southern Europe to the Nordics
- Optimal logistics solutions based on specific customer requirements with environmental as well as economic advantages thanks to close relationships with state railways, private rail operators and wagon providers



SCANDINAVIAN RAIL SHUTTLE

RESPONSIBLE
LOGISTICS



Multimodal Rail Shuttle Solution

- Door-to-door
- Road transport from production sites in Europe via cross-dock terminals in Belgium to high capacity rail wagons
- Rail transport to Malmö and Hallsberg
- Distribution by road to consignees in Sweden, Norway, Finland and the Baltic states
- Daily departures
- 2-5 days transit time with high schedule integrity
- Environmentally advantageous
- Very attractive landed cost

SCANDINAVIAN LOGISTICS PARTNERS

Gent and Antwerpen

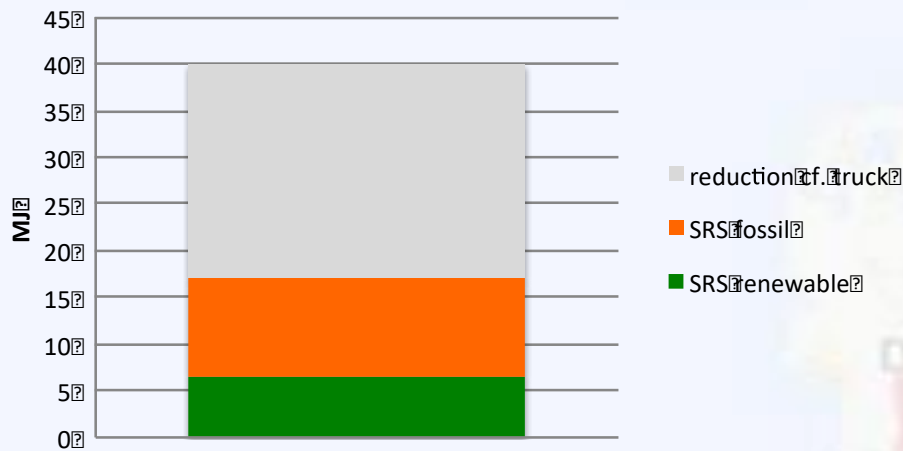
Hallsberg

Malmö

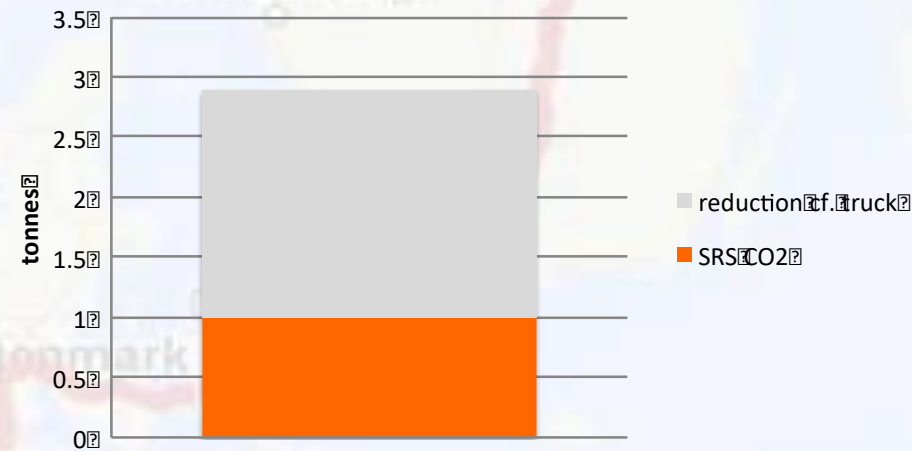


Environmental Impact Analysis - Imports from Holland via Scandinavian Rail Shuttle

Energy Consumption



CO2 equivalents



- Total energy consumption
 - where of fossil 10.5 Mj
 - where of renewable 6.5 Mj
 - Total energy saving rail vs. truck 23 Mj (57.5 %)
- Total CO2 equivalents
 - Total reduction rail vs. truck 1,9 mt (65.5 %)





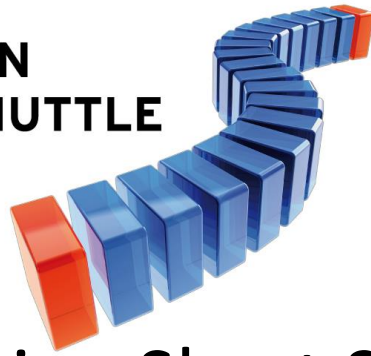
Sea Freight Solutions

- Intermodal sea freight solutions for imports/exports to and from the Nordics and the rest of the world
- Short sea solutions within Europe
- Customised solutions for both Full Container Loads, Less than full Container Loads and Non Containerized Cargoes
- Weekly departures from all base ports in Sweden
- Door-to-door with fully integrated pre- and on-carriage to and from ports and terminals at pre-agreed transit and delivery times



SCANDINAVIAN SHORT SEA SHUTTLE

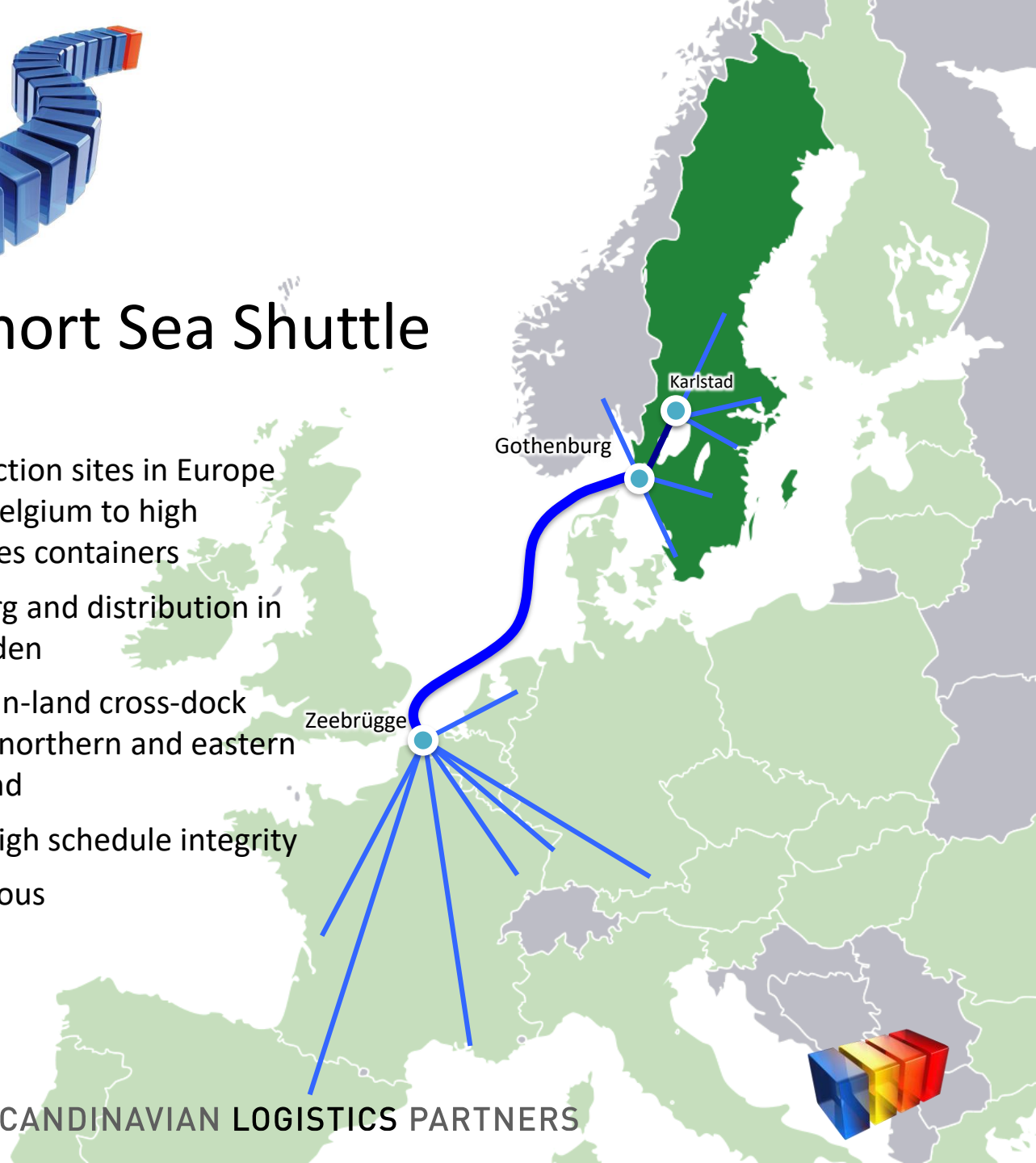
RESPONSIBLE
LOGISTICS



Scandinavian Short Sea Shuttle

- Door-to-door
- Road transport from production sites in Europe via cross-dock terminal in Belgium to high capacity 44 pallets/80 tonnes containers
- Sea transport to Gothenburg and distribution in western and southern Sweden
- On-carriage rail haulage to in-land cross-dock terminal for distribution to northern and eastern Sweden, Norway and Finland
- 5-7 days transit time with high schedule integrity
- Environmentally advantageous
- Very attractive landed cost

SCANDINAVIAN LOGISTICS PARTNERS



Environment Impact Analysis – Belgium to south Sweden

Energy consumption and greenhouse gases (GHG) in accordance with EN 16258

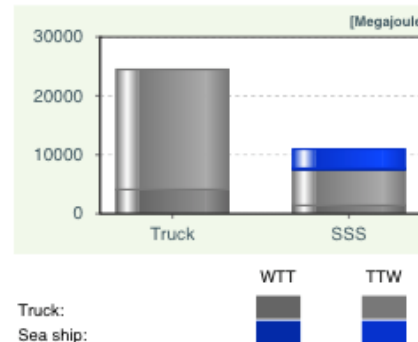
Energy consumption

WTW [Megajoule]

	Truck	SSS
Truck	24,475	7,426
Sea ship	0	3,541
Sum	24,475	10,967

TTW [Megajoule]

	Truck	SSS
Truck	20,367	6,012
Sea ship	0	3,252
Sum	20,367	9,264



Scandinavian Short Sea Shuttle uses **55 % less energy** than a truck...

Well-to-Wheel (WTW) = Well-to-Tank (WTT) + Tank-to-Wheel (TTW)

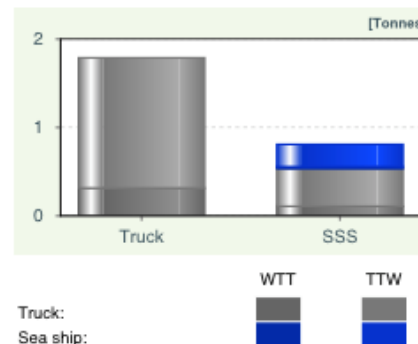
GHG emissions (calculated as CO2 equivalents)

WTW [Tonnes]

	Truck	SSS
Truck	1.8	0.5
Sea ship	0	0.3
Sum	1.8	0.8

TTW [Tonnes]

	Truck	SSS
Truck	1.5	0.4
Sea ship	0	0.3
Sum	1.5	0.7



and gives **60 % less CO2 emissions**

Well-to-Wheel (WTW) = Well-to-Tank (WTT) + Tank-to-Wheel (TTW)





Road Freight Solutions

- Daily departures with product adapted trailers from Eastern Sweden to receivers in Eastern, Southern and Western Europe
- System for Full Truck Loads as well as Less than full Truck Loads from producers in Europe to receivers in Scandinavia
- Just-in-time deliveries of project cargoes to construction sites etc.
- Special solutions for heavy, out-of-gauge, dangerous goods and other demanding transports offer optimal flexibility and high level of service at attractive costs
- Euro V and Euro VI trucks, alternative fuels if possible





Air Freight Solutions

- Customised solutions for faster global transports at the right cost
- Courier service
- Express deliveries from own dedicated warehouse for the shipping and offshore industries
- Special solutions for live animals, dangerous goods and security classified cargo
- Personal couriers hand-to-hand
- Dedicated freight charters
- Door-to-door with integrated pre- and on-carriage to and from airports and terminals at pre-agreed delivery times
- 24/7 availability





Courier Solutions

- Large volumes and favourable terms with the world's leading courier companies
- Highly cost efficient solutions also for smaller customers
- Global reach
- Personal courier for sensitive shipments with responsibility hand-to-hand





Marine Logistics Solutions

- Just-in-time deliveries of original and spare parts to the Shipping and Offshore industries
- Own terminal in Gothenburg for in-transit stock, humidity controlled warehousing, pick/pack and order administration
- EDI integration with manufacturers and receivers
- Local specialised agents for safe distribution to ships, platforms, ship yards etc





Aerospace- och Defence Logistics Solutions

- Competence in managing the specific requirements and challenges of handling defence- and aerospace material.
- Strict processes for license management in Sweden, handling of ITAR regulated goods, military and dual use material.
- Cooperation with one of the leading defence logistics companies in North America licensed to handle both *Foreign Military Sales* och *Direct Commercial Sales*.
- Well established contact with the US Armed Forces and the defence industry, as well as the civilian aerospace industry.





Ship Agency Solutions

- Port agency
- Logistics solutions for transhipments and land based pre- and on-carriage
- Focus on shipping lines and charterers specific needs without any bindings to terminals, transporters, other shipping lines or cargo owners
- Pro-active personal professional attention and responsibility
- Real time information to all parties to safeguard a cost effective port call
- Vast experience from all types of ships and cargoes
- Represented in the ports of Oxelösund, Gothenburg, Södertälje, Norrköping and Stockholm





Project Management

- Customised solutions over all transport modes
- Global reach through selected partners with specialist competence
- Project management with 24/7 monitoring and communication
- Smooth, time optimised and cost efficient solutions
- Organisation with long experience in e.g.:
 - Heavy and out-of-gauge transports
 - IMO 7 radioactive materials
 - IMO 1 explosive materials
 - Mining equipment
 - Power plants
 - Transformers and generators
 - Wind mills





Information Management

Rapid and accurate information is essential for today's complex and multi-faceted transportation and logistics flows.

- Scanlog has invested in the most advanced system support to streamline internal processes and have a fully integrated paperless production process.
- Automated monitoring and deviation reporting provides total visibility and control - for us, our customers and partners. It increases the quality of our services and creates time to provide even better service to our customers.
- Our clients can communicate electronically directly with our system through our web interface ScanLogIn or via EDI. We can handle most formats such as XML, EDIFACT, AnsiX12 and flat files.





ScanLogIn

ScanLogIn is our web-based client system. ScanLogIn provides full visibility of all shipments and vendor orders we handle for our clients.

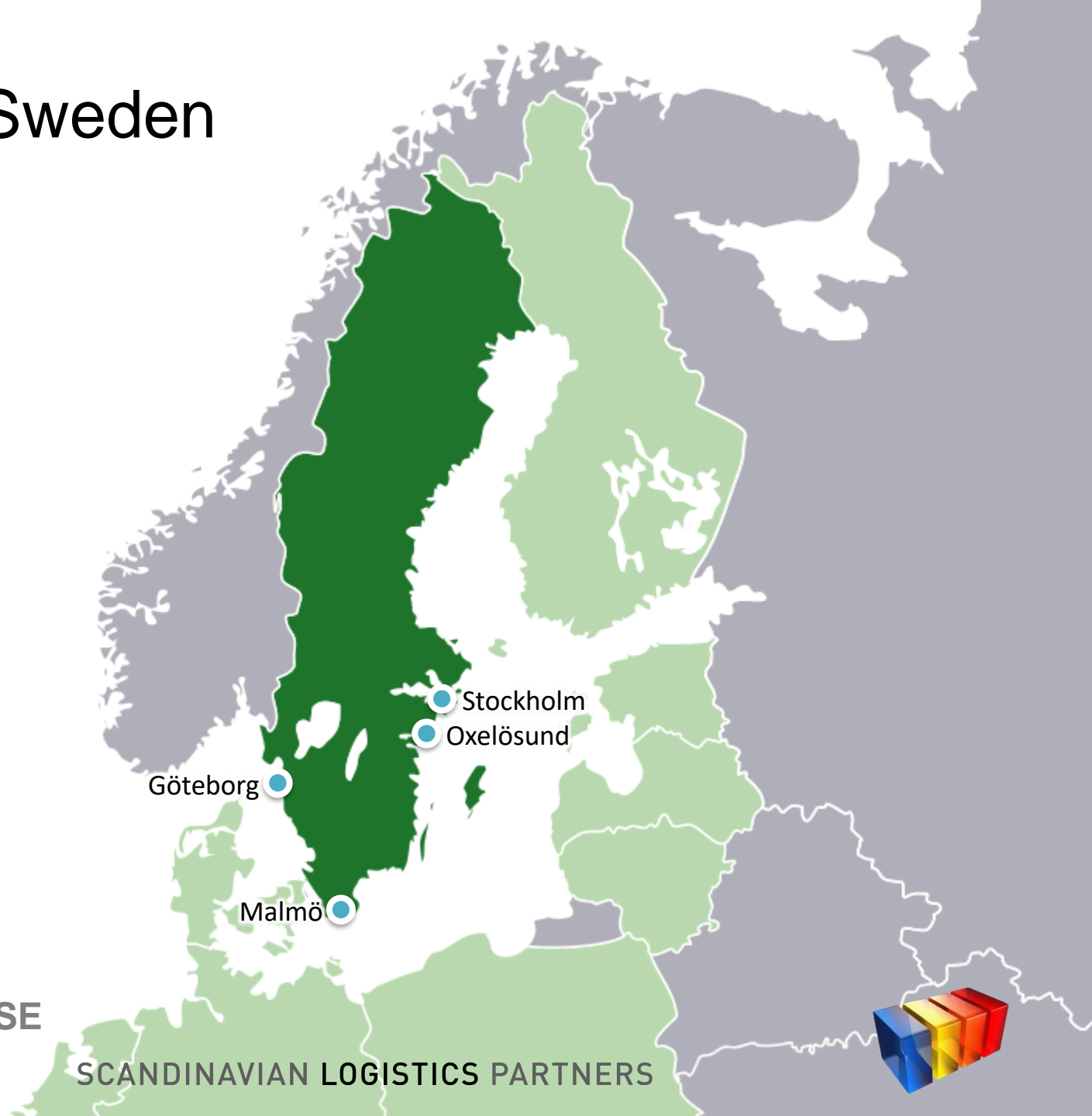
ScanLogIn contains e.g. the following features:

- Vendor follow-up
- Order Management
- Order follow-up
- Track & Trace
- Invoice Processing
- Statistics

ScanLogIn uses the same database as we do, our customers have in real time the same information as we have.



Offices in Sweden



WWW.SCANLOG.SE

SCANDINAVIAN LOGISTICS PARTNERS



Why Scanlog?

- We focus on solutions and customer needs, not transport mode or product
- We recognize and care about our customers, regardless of size
- We offer the most environmentally friendly and cost efficient solutions door-to-door
- Our partnership model ensures stronger commitment, accountability and reliability
- We keep our promises and take full responsibility

